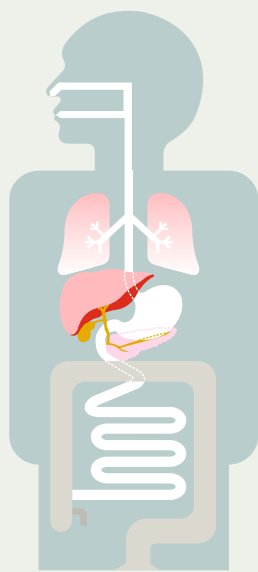


"Temple of Heart where Art of Medicine enhances the science of Surgery."



practo

lybra+



Dr. Gandhi's Nursing Home Pvt. Ltd.

1ST CERTIFIED SPECIALITY HOSPITAL FOR LAPAROSCOPIC, GASTRO-INTESTINAL, OBESITY & CANCER SURGERY

Add. : Mangal Murti CHS, Off S. K. Bole Road, Agar Bazaar, Near Raheja Princess, Dadar (West), Mumbai 400 028.

Phone : 2421 1555, 2421 2555 Fax : 2421 3555

Email : info@drgandhi.org

www.drgandhi.org

KNOW YOUR DOCTOR

Dr. MANOJ GANDHI

DNB (Surgery)

CONSULTANT SURGEON

SPECIALIST - LAPAROSCOPIC, GASTRO-INTESTINAL & OBESITY SURGERY

Fellowship in Advanced Laparoscopic & Pancreatic Surgery (UK)
Diploma in Advanced Laparoscopic Surgery (France)
Robotic Laparoscopic Colorectal Surgery (Italy)



Dr. Manoj Gandhi, is a Gastro-intestinal, Laparoscopic and Obesity Surgeon practising in Mumbai.

His field of speciality is Obesity Surgery and Advanced Gastrointestinal Laparoscopic Surgery. He received a Fellowship in Advanced Laparoscopic Surgery from Leeds Institute of Minimal Invasive Surgery, UK and also a Diploma in Advanced Laparoscopic Surgery from European Institute of Tele Surgery, France. He also underwent Robotic Laparoscopic Colorectal Surgery training in Italy. He has vast experience in these specialities and has performed hundreds of procedures in many hospitals across India.

Director - Dr. Gandhi's Nursing Home Pvt. Ltd.

Mon. - Sat. 9 am to 10 am & Mon. to Fri. 5 pm to 8 pm

Visiting Consultant :

S. L. Raheja - Fortis Hospital - Tues. / Fri. 10 am to 11 am

Wockhardt Hospital - Wed. 10 am to 11 am

Apollo Spectra Hospital - Wed. 11 am to 12 noon

Global Hospital - Thurs. 11 am to 12 noon

Shushrusha Hospital

Dr. Ambedkar Central Railway Hospital

ACCOMODATION



Semi Deluxe Room



Delux Room

OPERATION THEATRE



Major, Laparoscopic & Cancer Theatre with Remote OT Table + OT Lights + Anaesthesia Machine with sevoflurane



Minor OT

DIAGNOSTIC ROOM



X-ray

COMPLETE HEALTH CHECK-UP PLANS

Basic Plan	Executive Plan	
CBC	CBC	Lipid Profile
ESR	ESR	Liver Profile
Glyco. Hb.	Glyco. Hb.	HIV
BSF	BSF	Australia Antigen
BSPP	BSPP	T3, T4, TSH
Urine R/M	BUN	Urine R/M
X Ray Chest	S. Creatinine	X Ray Chest
ECG	S. Uric Acid	ECG
MER	S. Electrolytes	MER
2000/-	4000/-	

ACCOMODATION - BED CHARGES & DEPOSIT

Effective from 1st January, 2018

	Triple Share Semi Deluxe	A/c Single Deluxe	A/c SICU
Bed Charges	1500	3000	3000
Deposit	10,000	20,000	20,000
Nursing Charges	10%	15%	15%

International Patients will be charged 25% more.

SPECIALIZED SERVICES

- Laparoscopic (Key Hole) Surgery
 - Gall Bladder Stones (Cholecystectomy)
 - Uterus Removal (Hysterectomy)
 - Fibroid removal (Myomectomy)
 - Appendix removal (Appendicectomy)
 - All types of Hernia repair with Mesh
 - Adhesiolysis (for Intestinal obstruction)
 - Fundoplication (for GERD, Hiatus Hernia)
- Ovarian Cyst Excision
- Tubal Ligation
- Cancer (Onco) Surgery
- Gastro-Intestinal Surgery
- Stapler Haemorrhoidectomy (For Piles)
- Sigmoidoscopy

MULTI SPECIALITY SERVICES

- General Surgery
- Day Care Surgery
- General Medicine
- Pediatrics
- Urosurgery
- Plastic Surgery
- Paediatric Surgery
- Gynaecology (Laparoscopy)
- Orthopaedics
- ENT (Ear, Nose, Throat)

DIAGNOSTIC CENTRE

- Pathology • X-Rays • ECG
- Sonography - By Apt. • 2D Echo with Colour Doppler - By Apt.

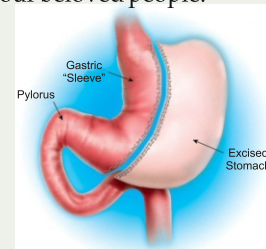
WEIGHT LOSS / OBESITY SURGERY (SLEEVE GASTRECTOMY)

Laparoscopic Sleeve Gastrectomy

Bariatric (Obesity) surgery is the most effective alternative to treat clinically severe obesity. Sleeve gastrectomy reduces the stomach capacity by means of a vertical mechanical suture that turns the stomach's natural shape of a bag into a tube. If you suffer from morbid obesity, consider bariatric surgery as the best option to improve your quality of life and enjoy with your beloved people.

How is sleeve gastrectomy performed ?

It is done by means of laparoscopic techniques. The surgeon can reach the stomach and using a special stapler, a vertical suture is made to divide the stomach in two. One of the sections is shaped like a tube that goes from the esophagus to the intestine. The other one is separated and removed.

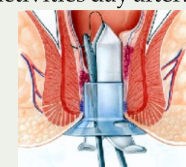


STAPLER HAEMORRHOIDECTOMY (for Piles)

MIPH (Minimally Invasive Procedure for Haemorrhoids), this operation can be performed as day surgery under a very short general anaesthetic (even under a regional anaesthetic in certain conditions) and patient can go home the same day. Patients who have undergone this operation report that their post-operative pain levels are very low and able to resume normal activities day after.

Benefits

- Reduced Pain • Shorter Hospital Stay
- Reduced Blood Loss • Faster return to Normal Activity
- Significantly reduced Post Surgery Discomfort
- No raw / prolonged wound



LAPAROSCOPIC PROCEDURES



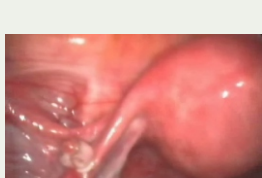
Laparoscopic Cholecystectomy for Gall Bladder Stones



Laparoscopic Appendectomy



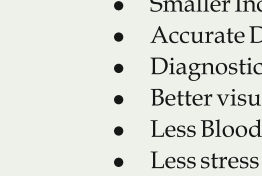
Laparoscopic Ovarian Cyst excision



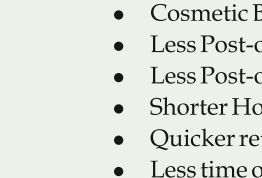
Laparoscopic Hernia Repair (Mesh Plasty)



Laparoscopic Fundoplication for Hiatus Hernia



Laparoscopic Sleeve Gastrectomy (Weight Loss Surgery)



Laparoscopic Tubal Ligation

Laparoscopic Hysterectomy or Myomectomy for fibroid uterus

ADVANTAGES OF LAPAROSCOPIC SURGERIES

- Smaller Incisions
- Accurate Diagnosis of pathology
- Diagnostic and therapeutic surgery is possible
- Better visualization for the surgeon due to magnified vision
- Less Blood Loss
- Less stress on body's immunological defences
- Documentation of surgery on CD
- Cosmetic Benefits
- Less Post-operative Pain and Faster Recovery
- Less Post-operative adhesions
- Shorter Hospital Stay
- Quicker return to normal activities as before surgery
- Less time off work

FACILITIES

Beds - 15

Operation Theatres - Major and Minor

Central Oxygen Supply - on all beds and both Operation Theaters

Medical Equipments

- Multi-Para Monitor with NIBP and Capnography
- Defibrillator with ECG Monitor
- Anaesthesia Machine with sevoflurane
- Underwater Electro-Surgical Cantersy Unit for all types of surgeries
- Laparoscopic Surgeries being performed with Camera and Telescope from Karl Storz, Germany
- Remote controlled O.T. Table & O.T. Lights

Computer recording with CD transfer for Laparoscopic Surgeries

Computerized Billing

Parking and Lift - Parking is available at the front of the hospital very close to our main entrance as well as lift facility is available for the disabled.

Food - Only vegetarian food is allowed in the hospital. For those relatives who cannot get food for the patients, the hospital staff will arrange for the breakfast, lunch and dinner at extra cost, for which it should be informed on admission.

Medicine - Most of the medicines are available in the hospital, and included in the final bill. Medicines procured from the nearby chemists will be charged separately.

Stress on relatives - We take the stress away from the relatives for being present in the hospital 24 hours. They need not be present always in the hospital for providing food and medicines to their patients. We keep the contact no. of the responsible relative with us so that we can contact them as and when required.

Accompanying Relatives - If the vacant bed is occupied by the relative then extra charges will be applied as half of routine bed charges except in case of emergency or surgery - which shall be decided by the Hospital Authority. Only one relative is allowed in the Semi Deluxe Room during day time. Relatives will not be allowed to enter the hospital in any class after 9.30 p.m., unless emergency.

CANCER TREATMENT

CANCER SURGERIES

- **Head, Face, Neck Cancers -** Lip, Tongue, Alveolus, Buccal Mucosa & Larynx.
- **Thyroid and Parotid Glands -** Benign diseases and Cancers.
- **Plastic Reconstructive Surgeries.**
- **Breast Cancers -** Breast Conservative Surgery & Modified Radical Mastectomy.
- **Gynaecology & Genito - Urinary Cancers -** Wertheim's Hysterectomy, Groin node dissection, Partial and Total Penectomy, Radical Orchidectomy, Retroperitoneal Lymph node dissection, Radical Nephrectomy.
- **Gastro-Intestinal Cancers -** Radical Gastrectomy, Hemicolectomy, Anterior Resection and Abdomino-perineal resection.

CANCER CHEMOTHERAPY & COUNSELLING

MEDICLAIM / PRE-INSURANCE / CORPORATE HEALTH CARE SERVICES

CASHLESS HOSPITAL TREATMENT WITH INSURANCE COMPANIES THROUGH FOLLOWING TPA's

- Alankit Healthcare Ltd.
- Anmol Medicare Ltd.
- Anyuta Medinate Healthcare Pvt. Ltd.
- Dedicated Healthcare Serv. Pvt. Ltd.
- East West Assist Pvt. Ltd.
- Ericson TPA Healthcare Pvt. Ltd.
- Family Health Plan Ltd.
- Focus Health Care
- Genins India Ltd.
- Good Health Plan Ltd.
- Health India Pvt. Ltd.
- Happy Insurance TPA Pvt. Ltd.
- Heritage Health Services Pvt. Ltd.
- I-Care Health Management
- Medicare TPA Services Pvt. Ltd.
- Medsave Healthcare Ltd.
- Paramount Health Services Pvt. Ltd.
- Park Mediclaim Consultants Pvt. Ltd.
- Rothshield Healthcare Service Ltd.
- Safeway Mediclaim Services Pvt. Ltd.
- Spurthi Meditech TPA
- Sri Gokulam Health Services Ltd.
- Cigna TTK Health Insu. Co. Pvt. Ltd.
- United Health Care India.
- Vidal Healthcare Pvt. Ltd.

CASHLESS HOSPITAL TREATMENT DIRECT WITH INSURANCE COMPANIES

- Future Generali
- HDFC Ergo
- Max Bupa GIC
- Reliance GIC
- Star Health Ltd.
- Religare GIC
- Aditya Birla

PRE-INSURANCE HEALTH CHECK-UP

- HDFC Ergo
- National Insurance Co.
- New India Assurance Co.
- Oriental Insurance Co.
- United India Insurance Co.

CORPORATE EMPANELMENT

- Allianz AGA Assistance
- Health Infoexchange India
- International SOS
- McKinsey & Company
- Network 18
- ONGC
- Qualitas Clinicare Solutions
- Sky Healers India Pvt. Ltd.

INTERNATIONAL HEALTHCARE PROVIDER

- Doc Doc

SPECIALISTS TEAM

- Laparoscopic, Gastro-Intestinal & Obesity Surgeon
- Cancer (ONCO) Surgeon
- Bone Soft Tissue Cancer Surgeon
- Cardiologist
- Pathologist
- Sonologist & Radiologist
- Anaesthetist
- Physician
- Orthopaedic Surgeons
- ENT Surgeons
- Gynaecologist & Obstetrician
- Urologist

ROAD MAP



24 HRS. EMERGENCY SERVICES

Admission • Trauma • Surgery

For private circulation amongst medical practitioners only.